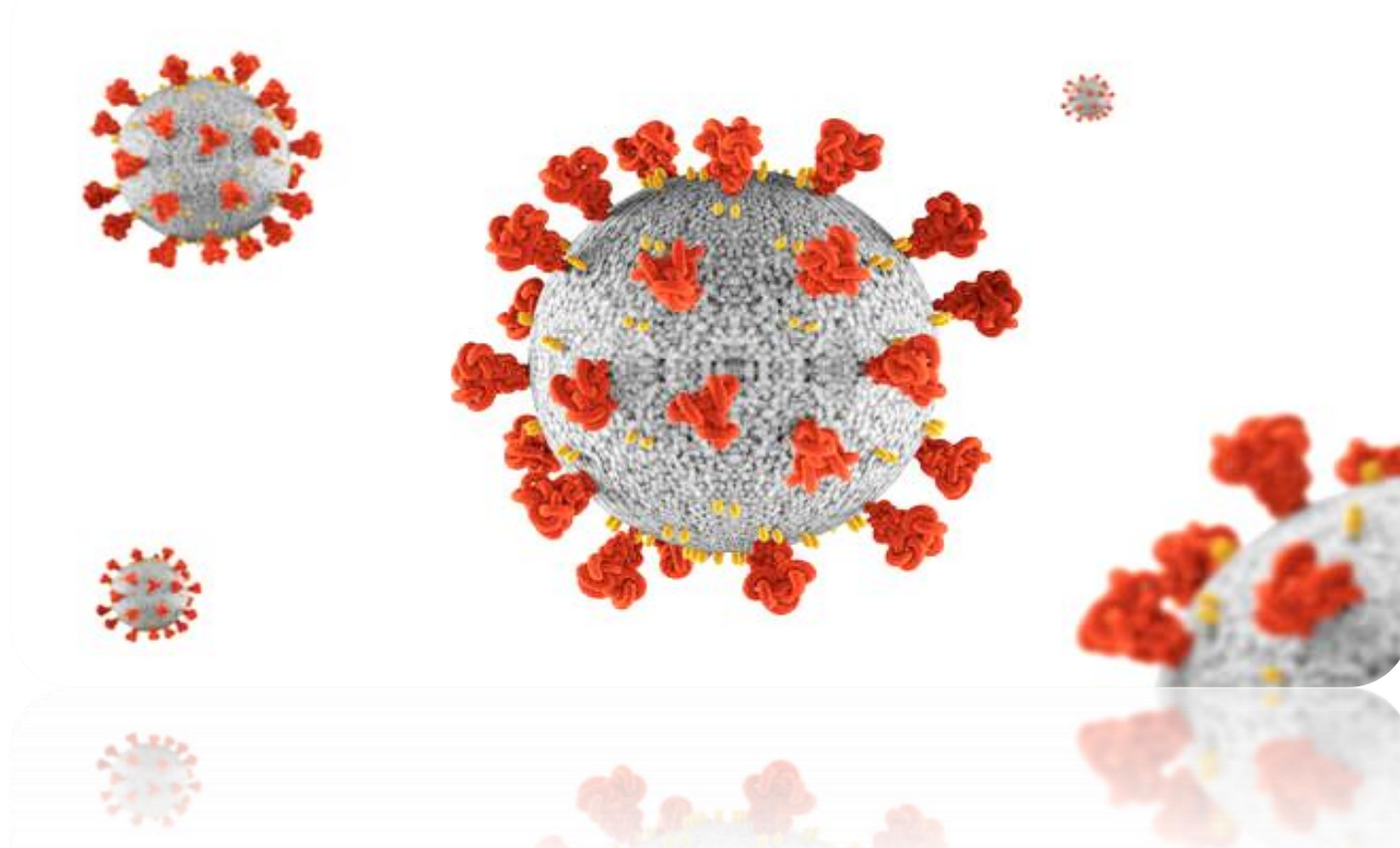
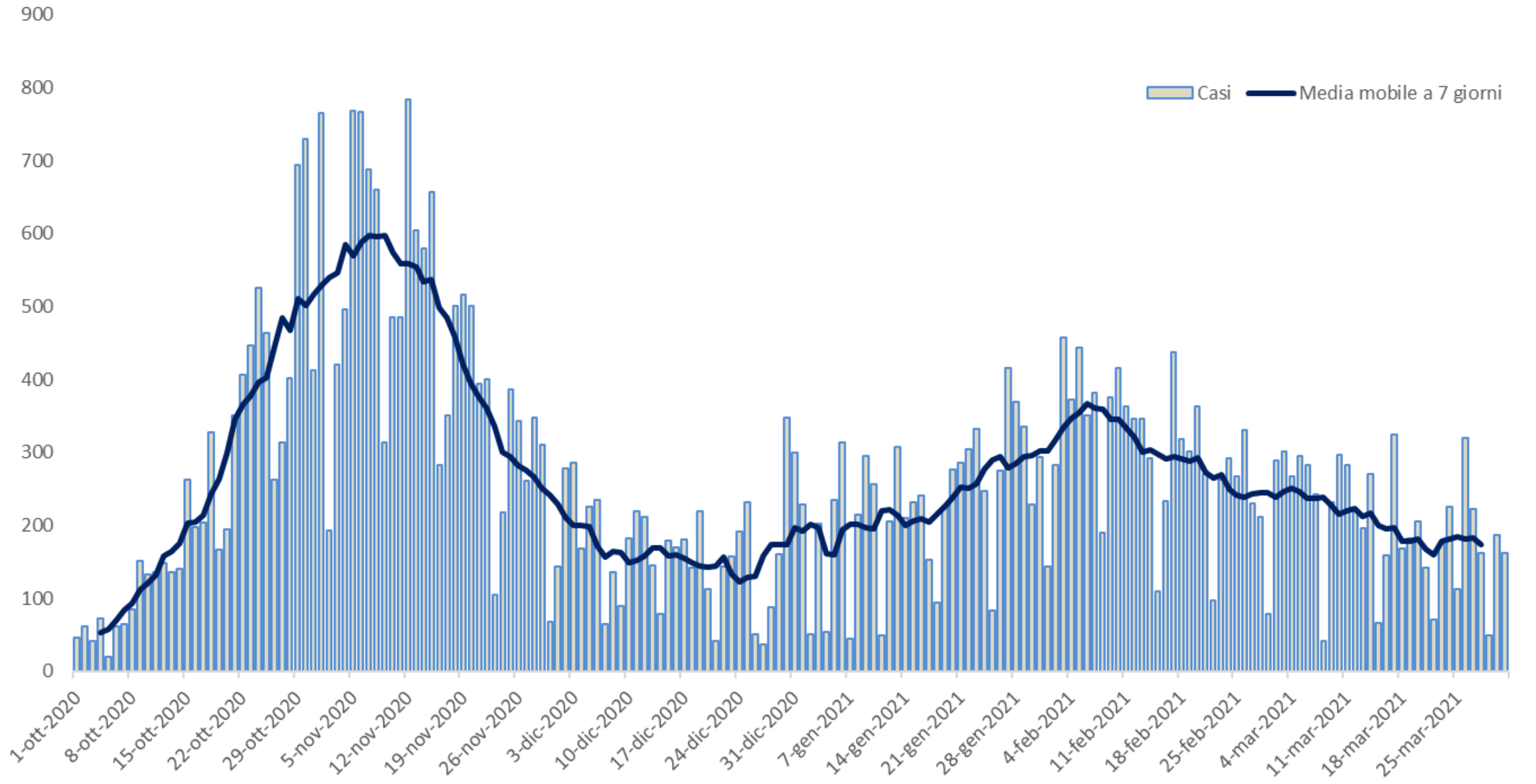


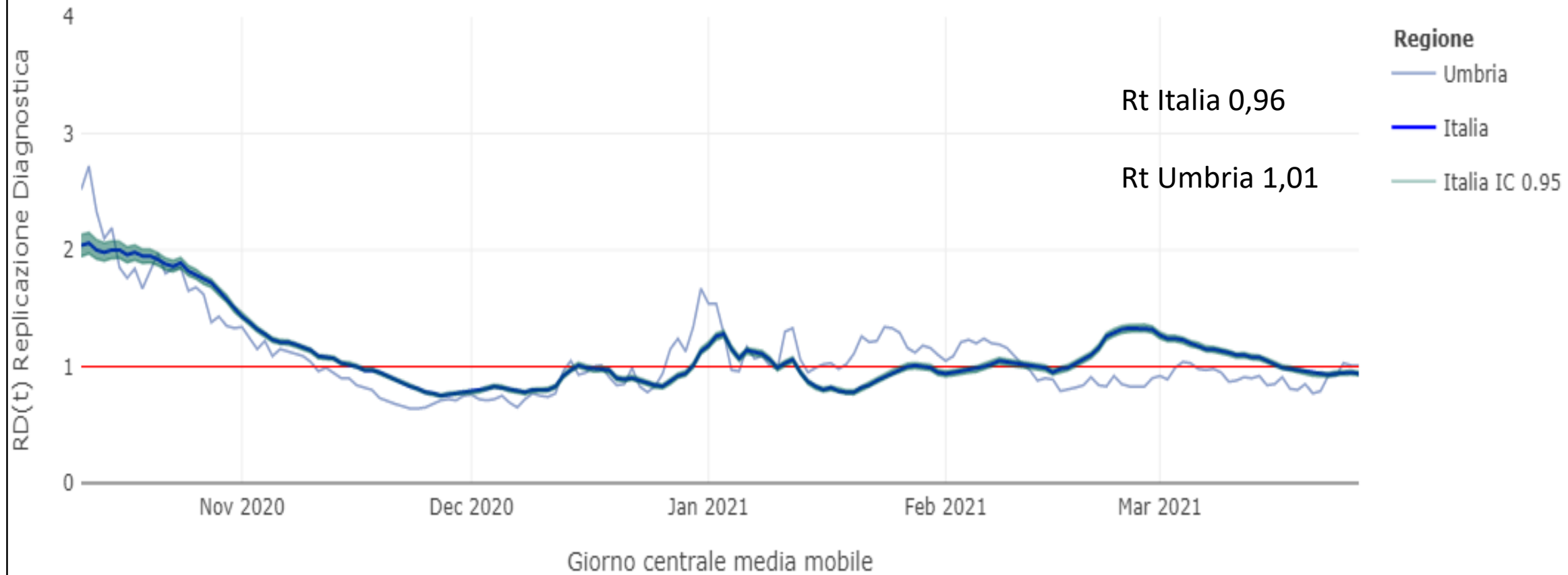
Analisi nucleo epidemiologico Sars- Cov 2 in Umbria



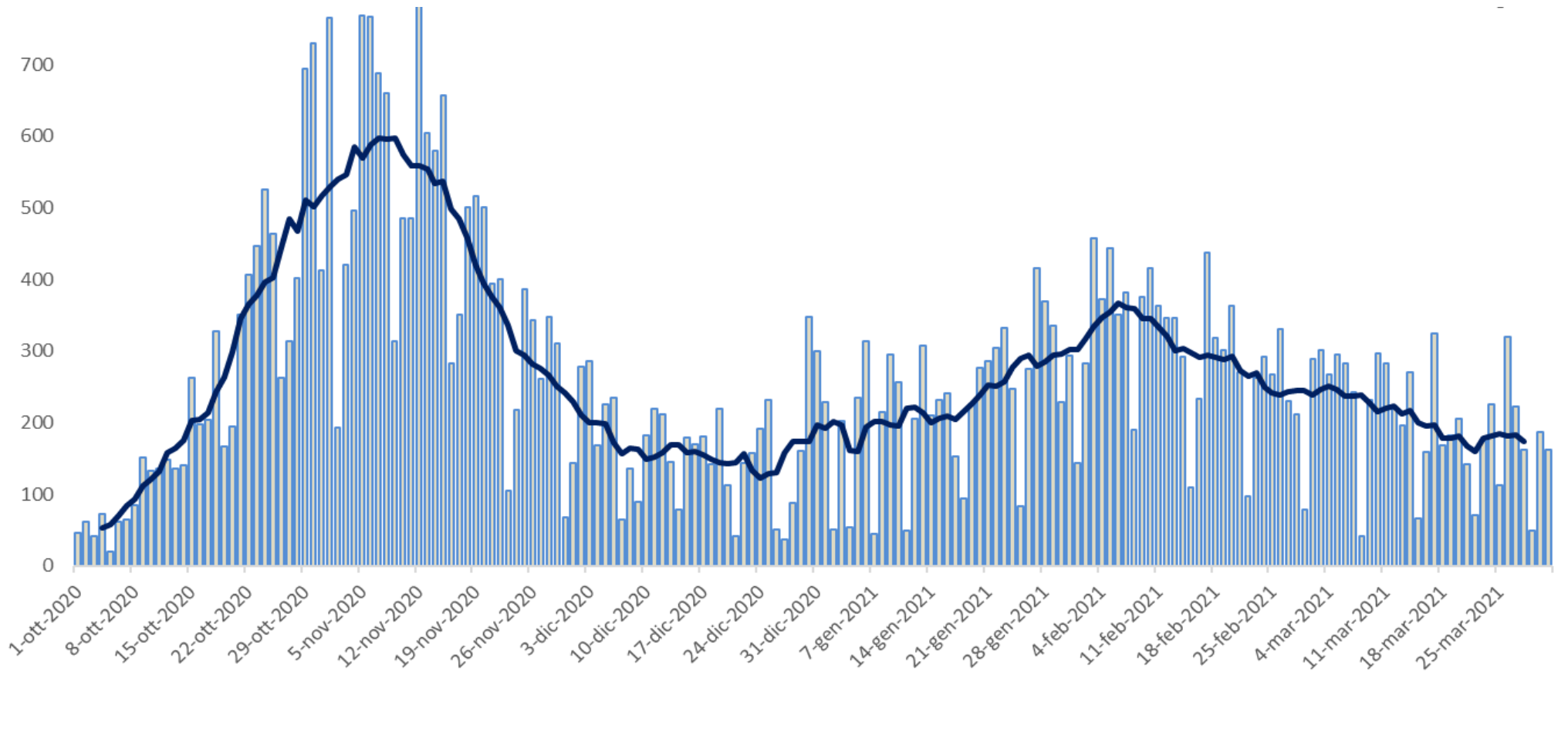
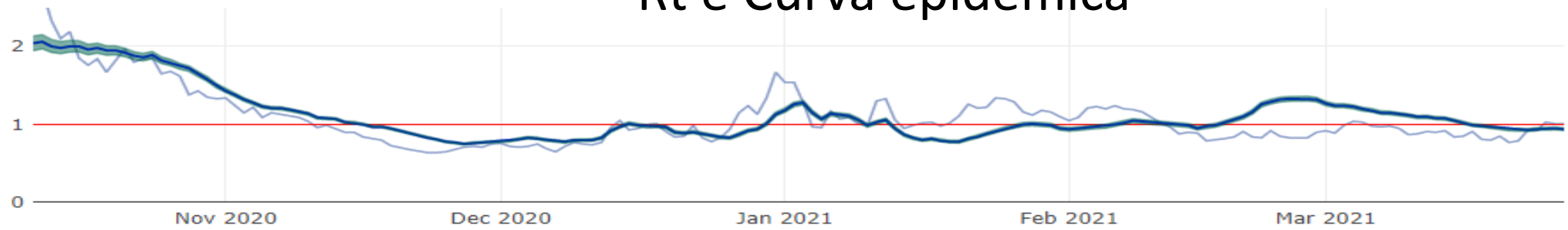
2 aprile 2021



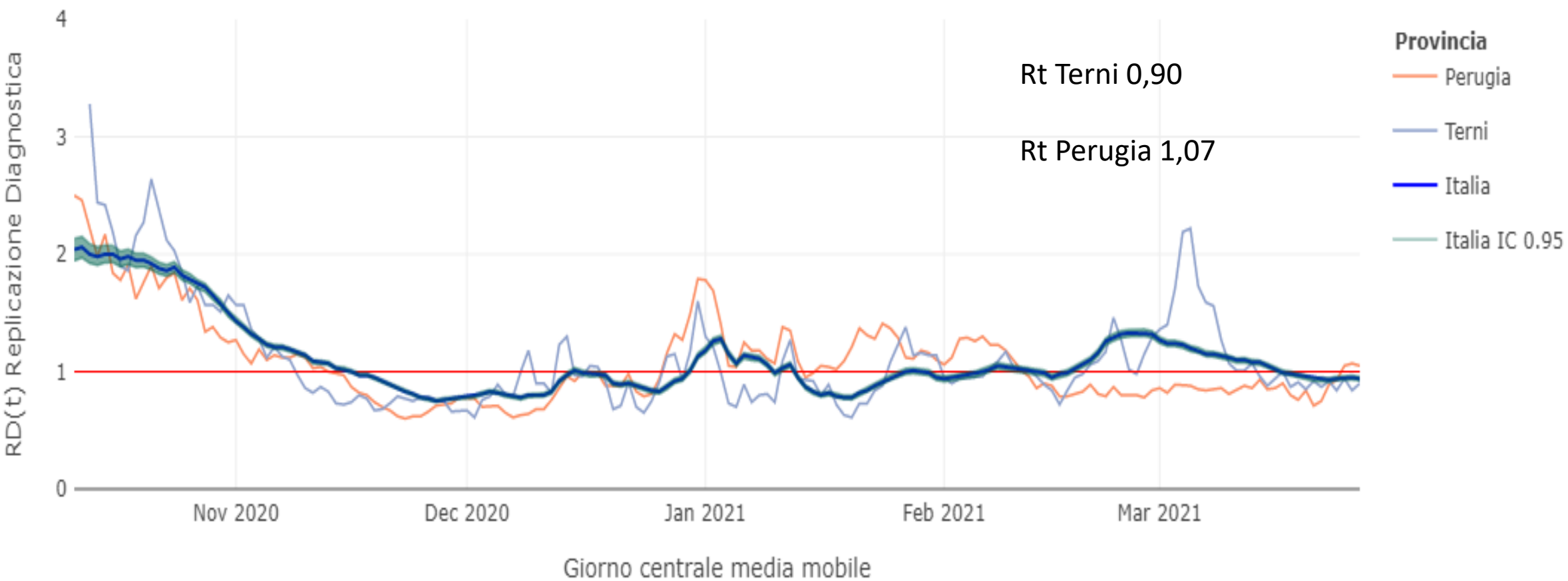
RD(t) Indice di Replicazione Diagnostica a lag 7 giorni (medie mobili a 7 giorni)



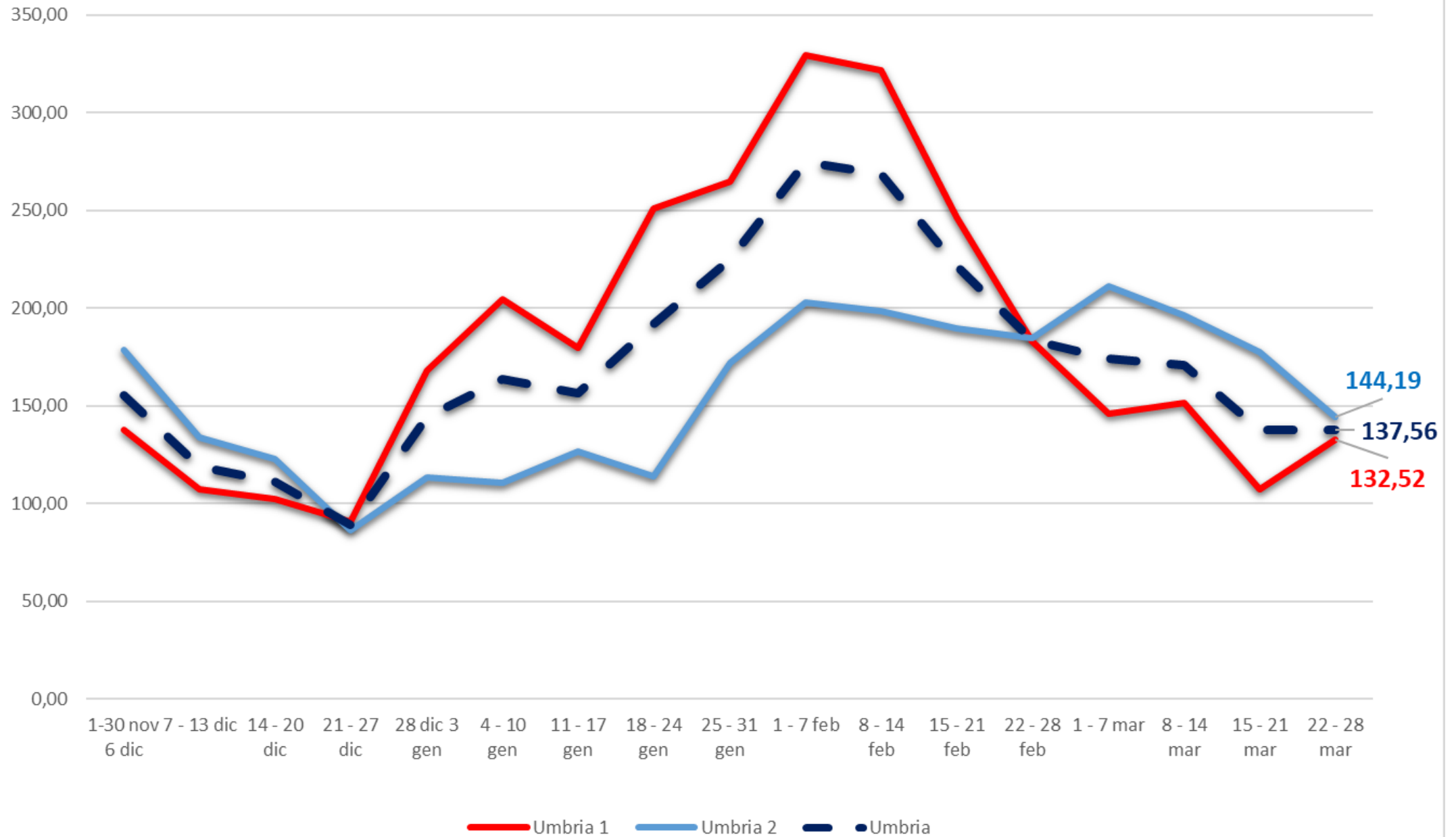
Rt e Curva epidemica



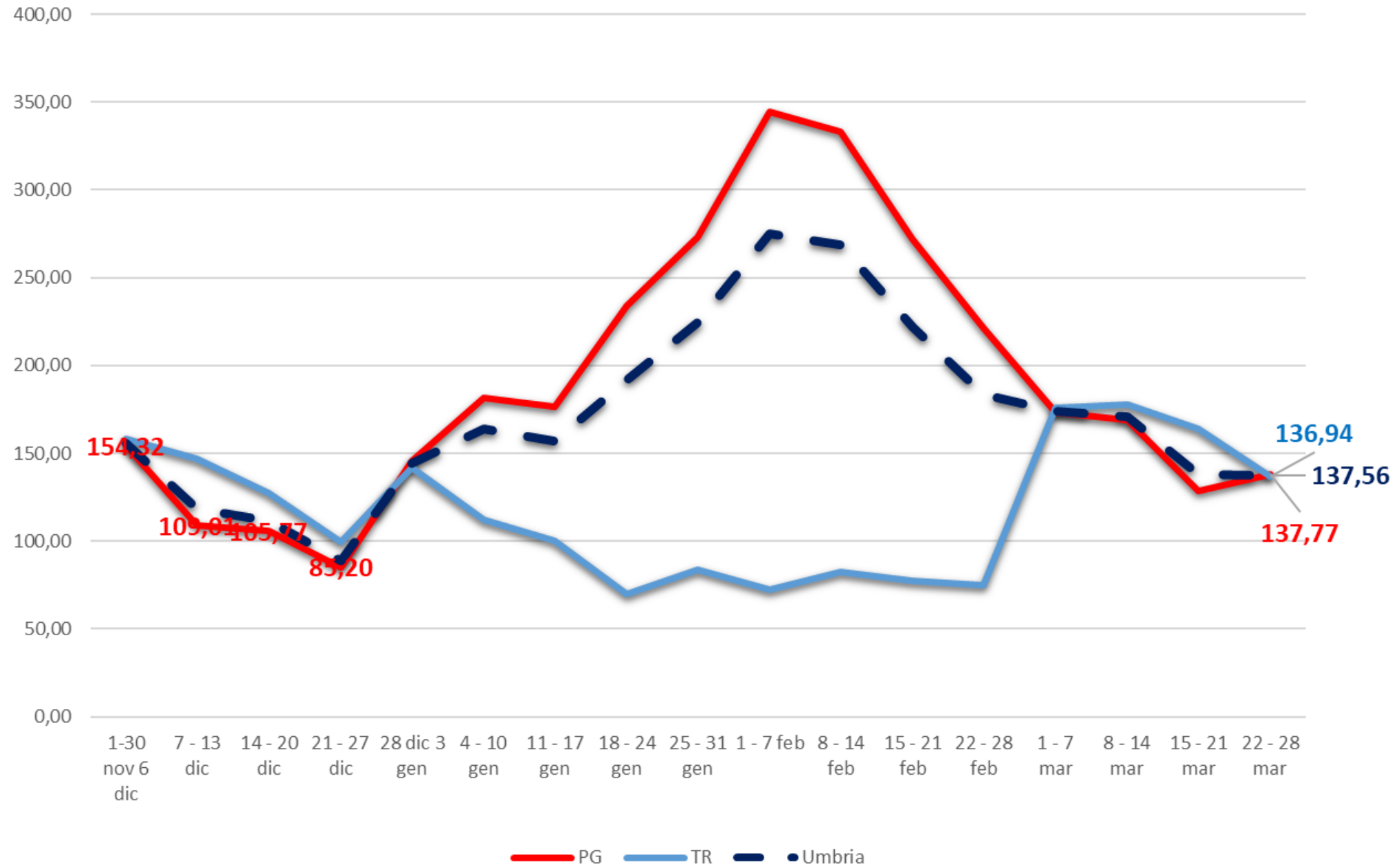
RD(t) Indice di Replicazione Diagnostica a lag 7 giorni (medie mobili a 7 giorni)

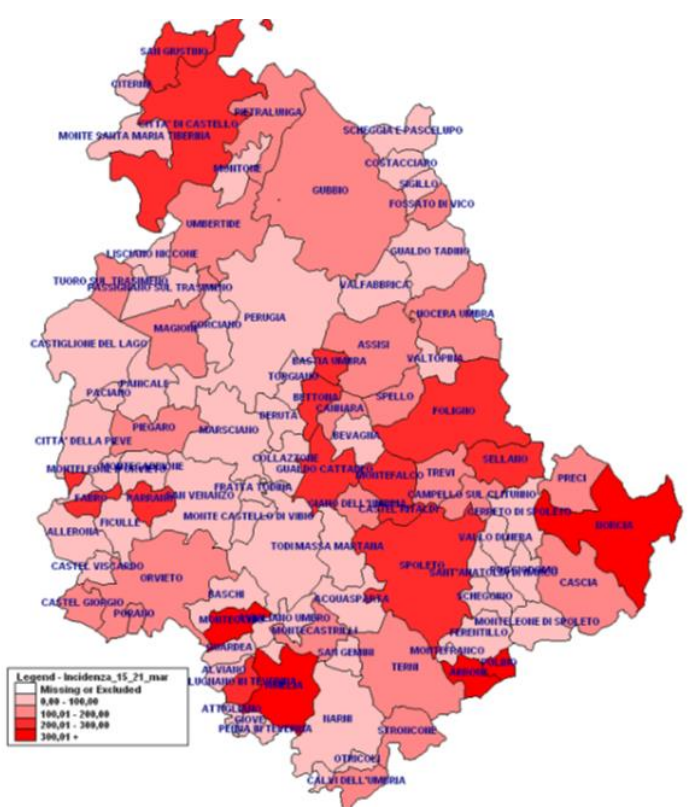


AUSL incidenza per 100.000 abitanti

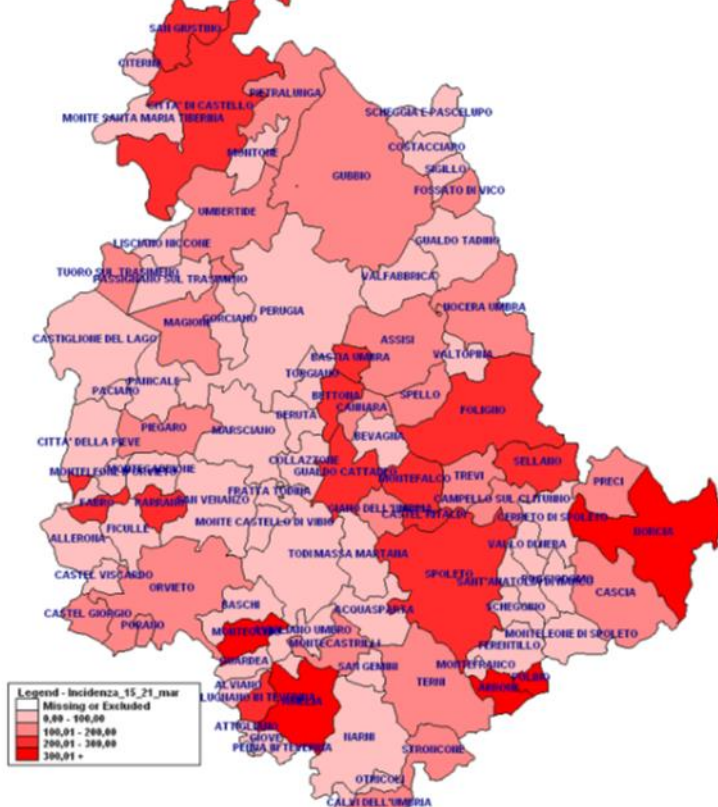


Province incidenza per 100.000 abitanti

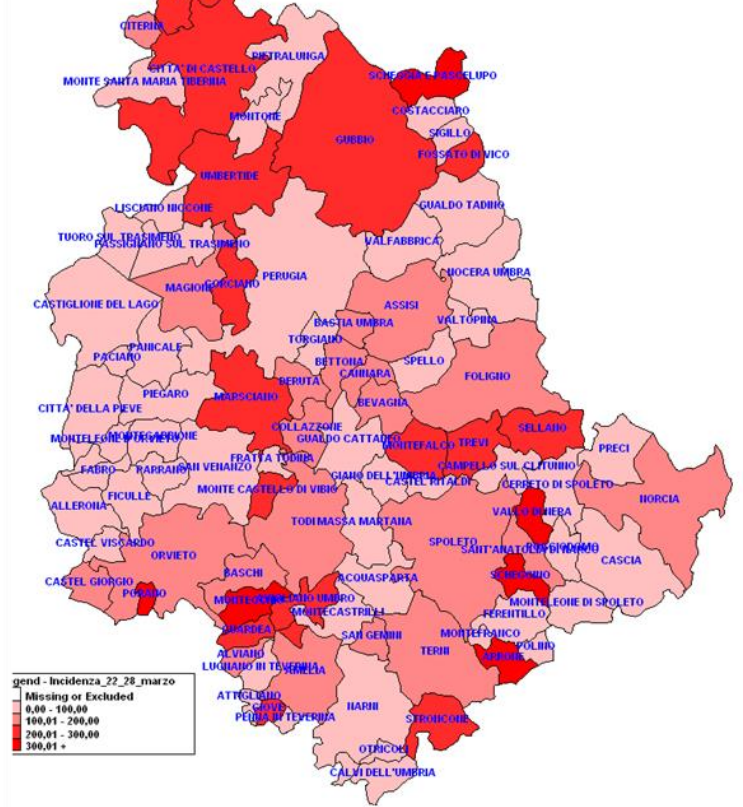




171,00

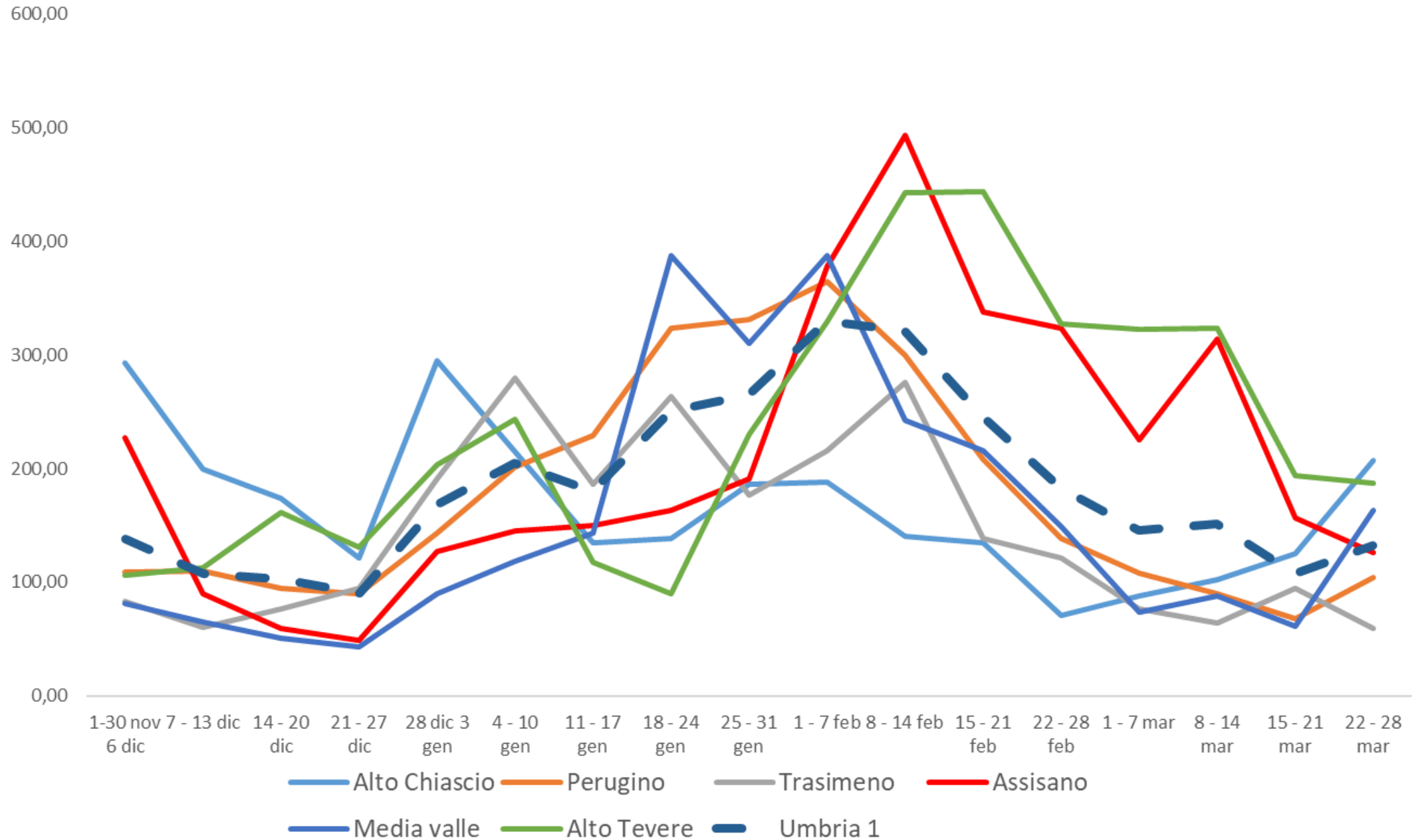


137,68

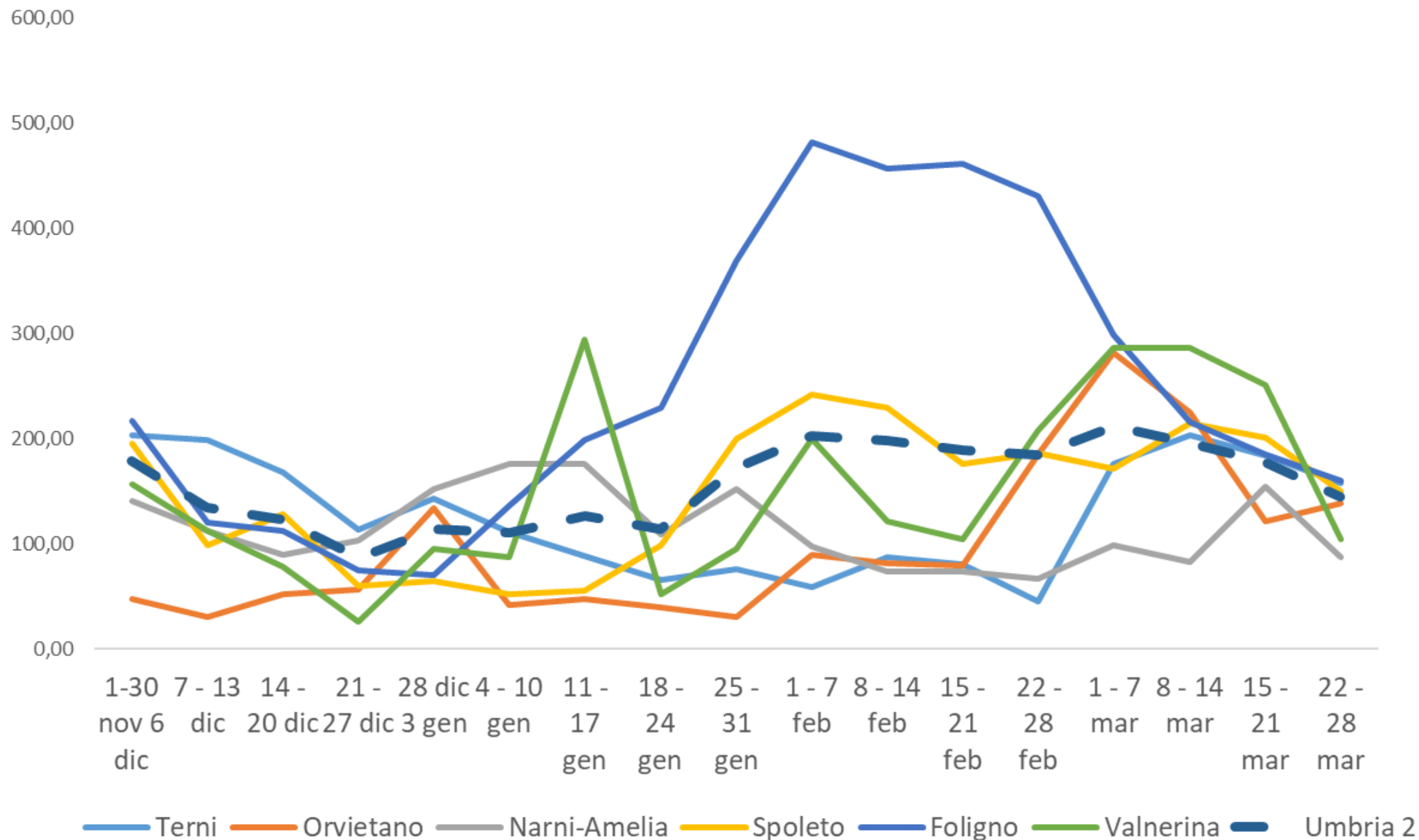


137,56

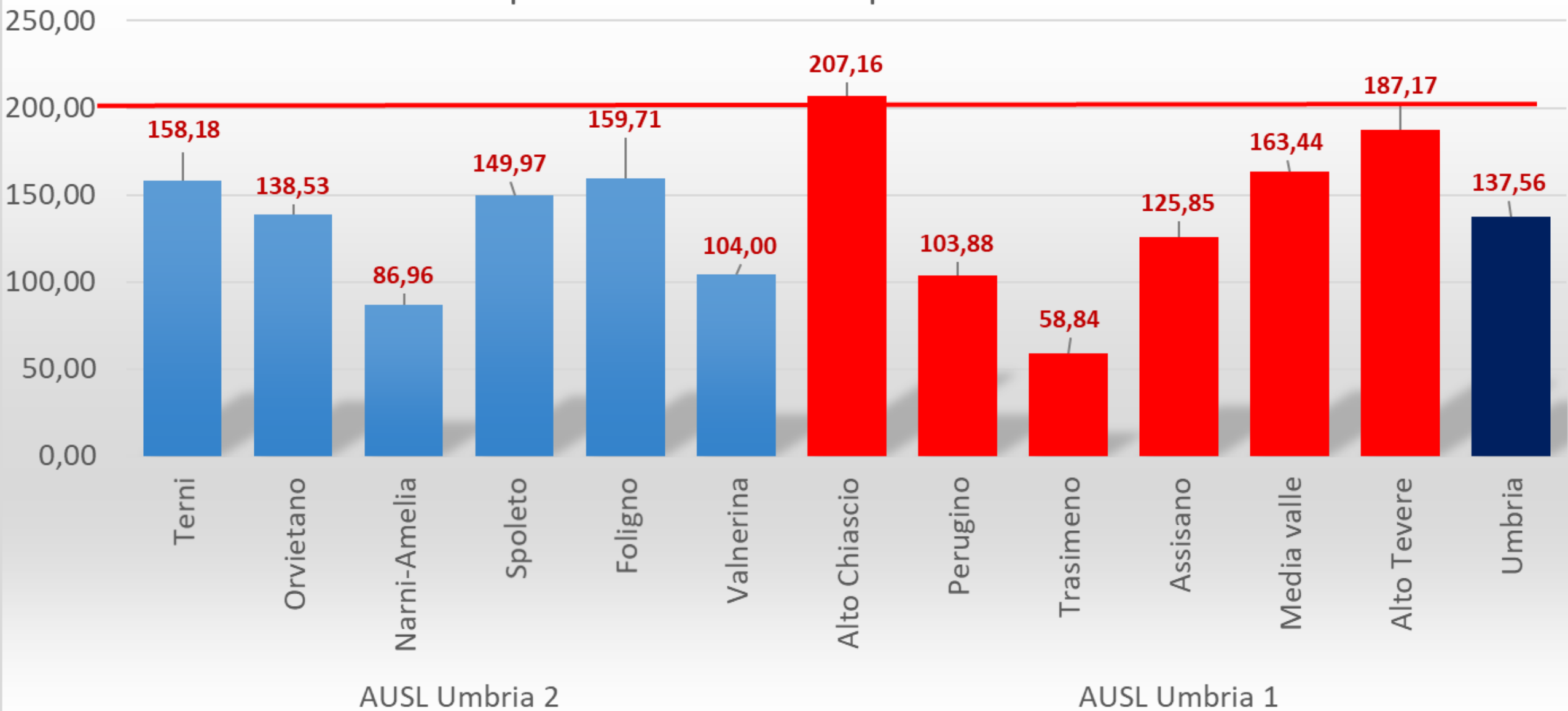
Distretti AUSL Umbria 1 incidenza per 100.000 abitanti



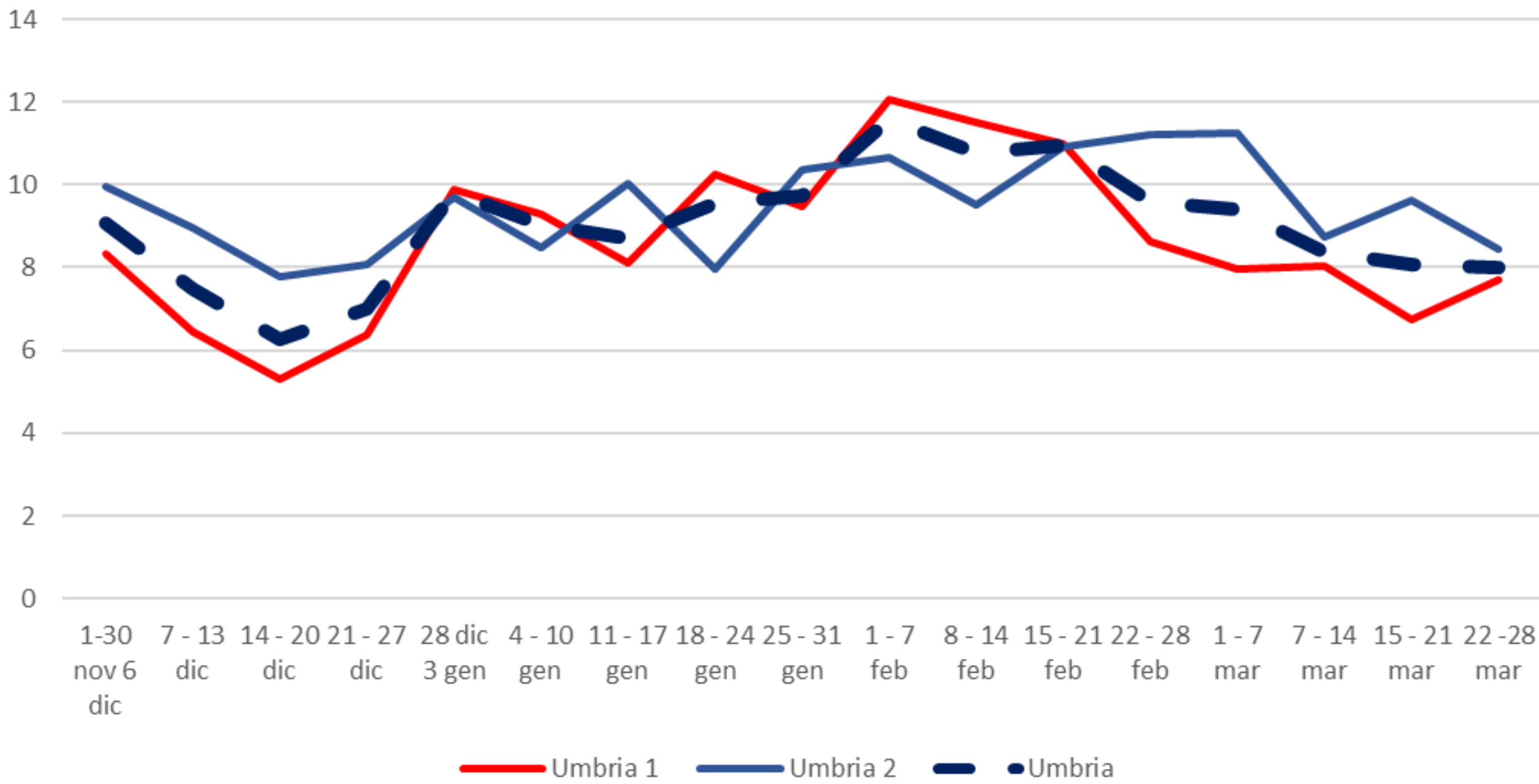
Distretti AUSL Umbria 2 incidenza per 100.000 abitanti



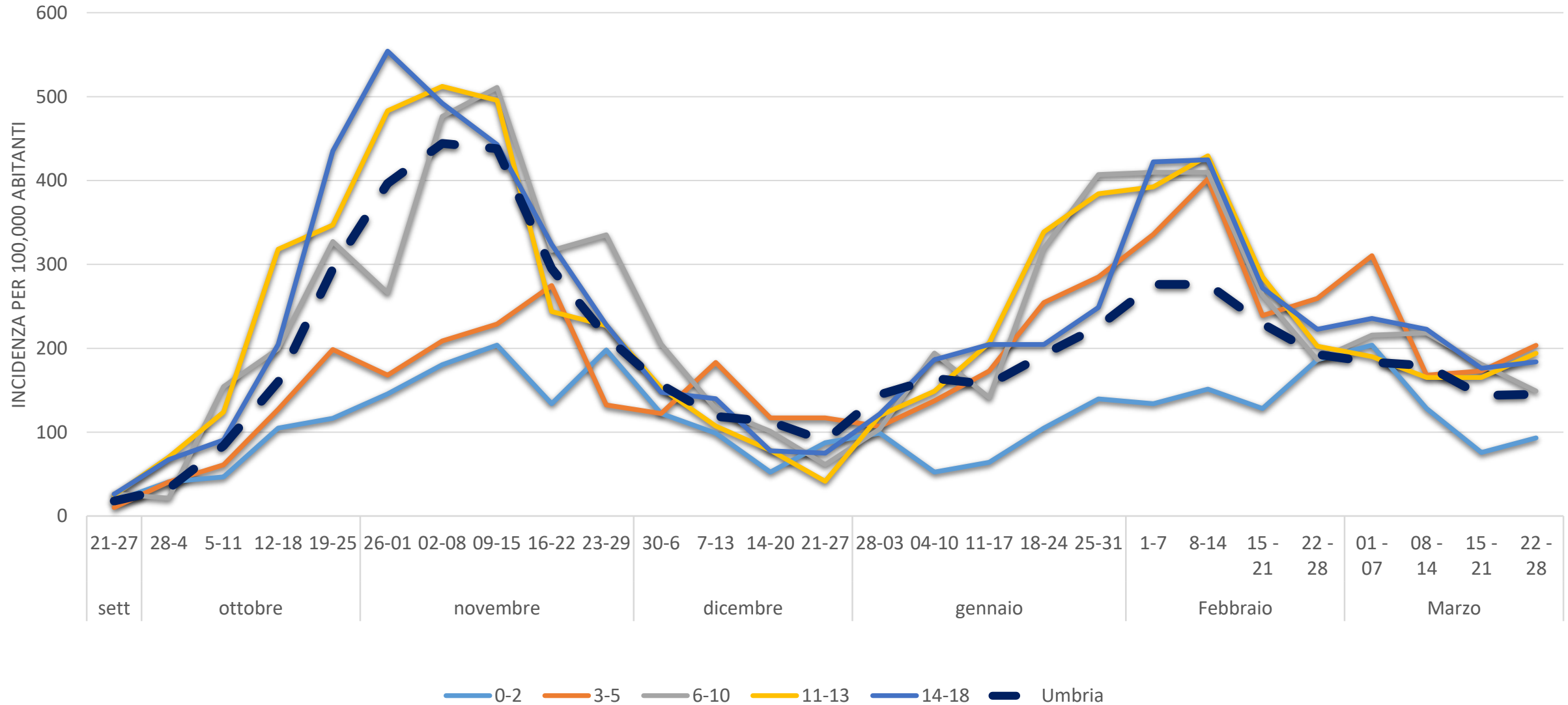
Incidenza per 100.000 abitanti per distretto sanitario



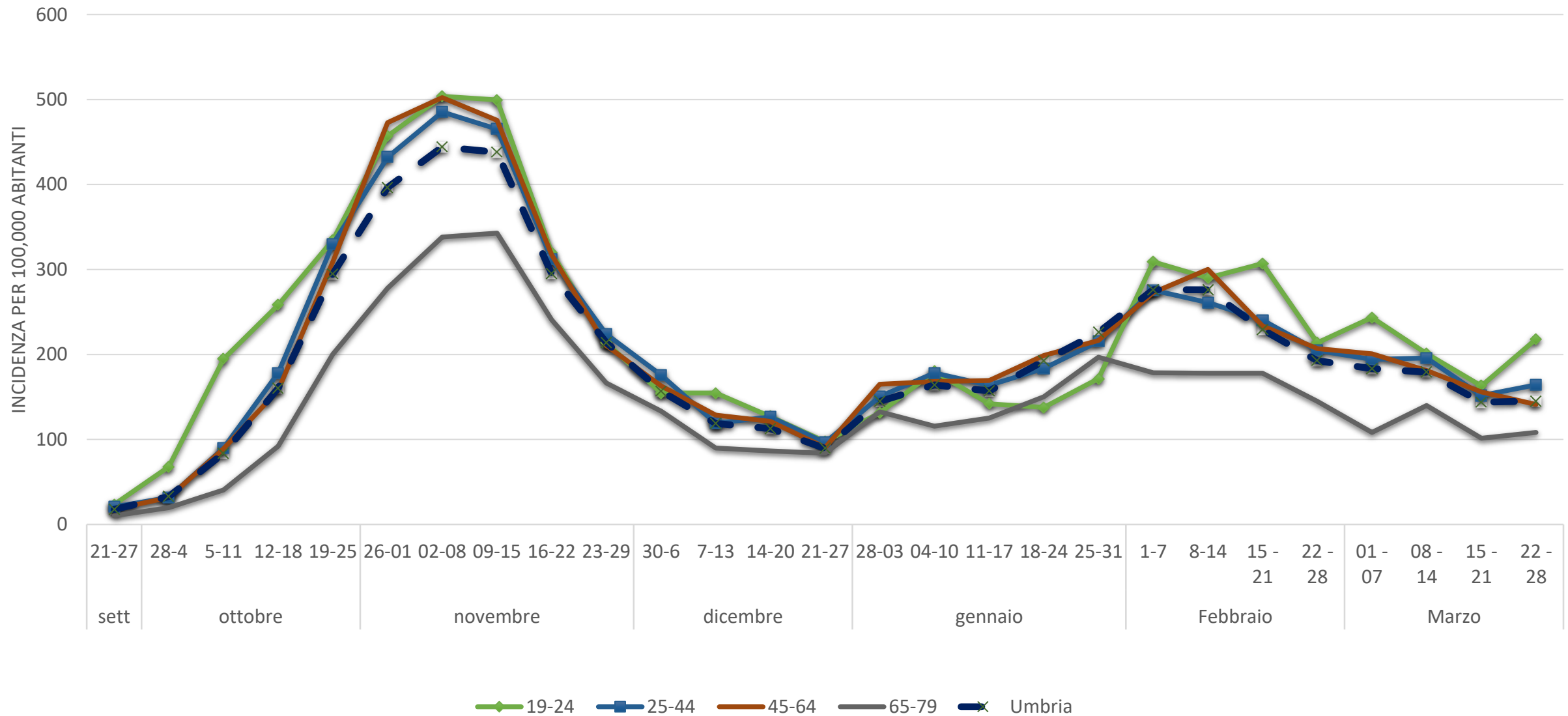
Rapporto Positivi/Tamponi per AUSL



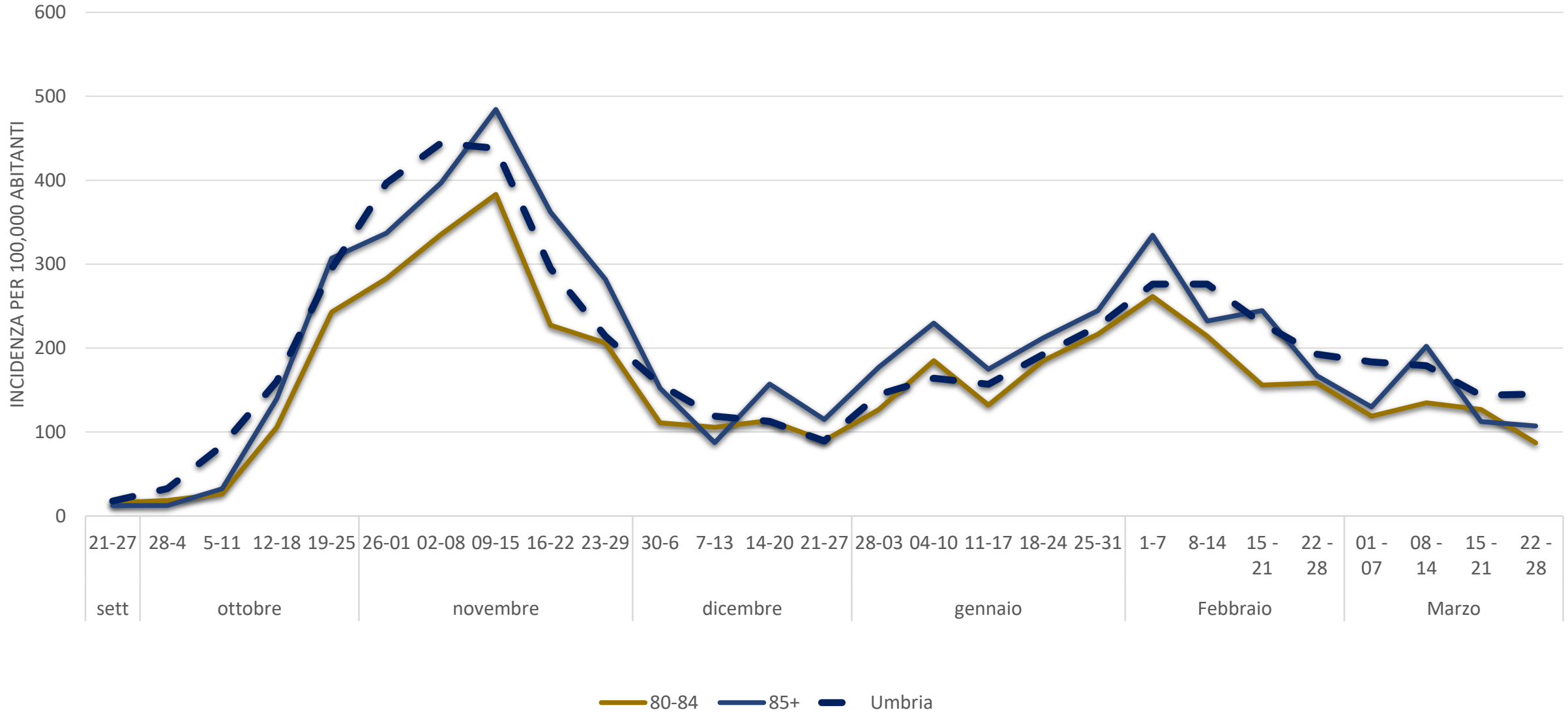
Umbria classi di età scolastica incidenza per 100.000 abitanti età scolare



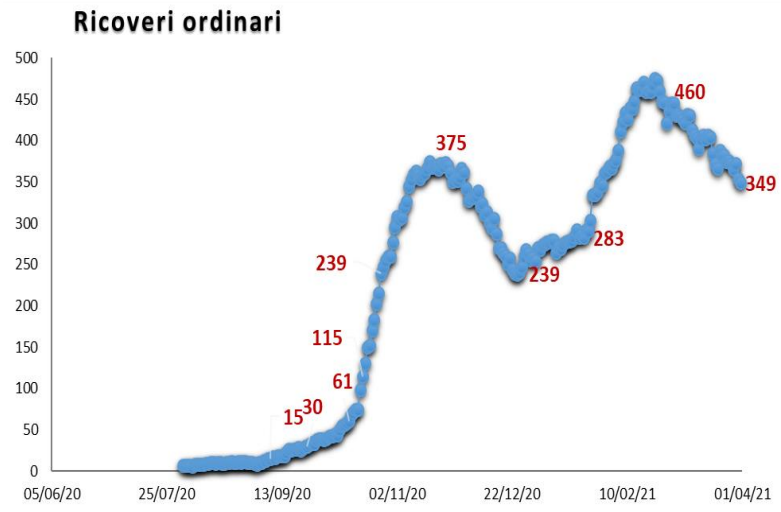
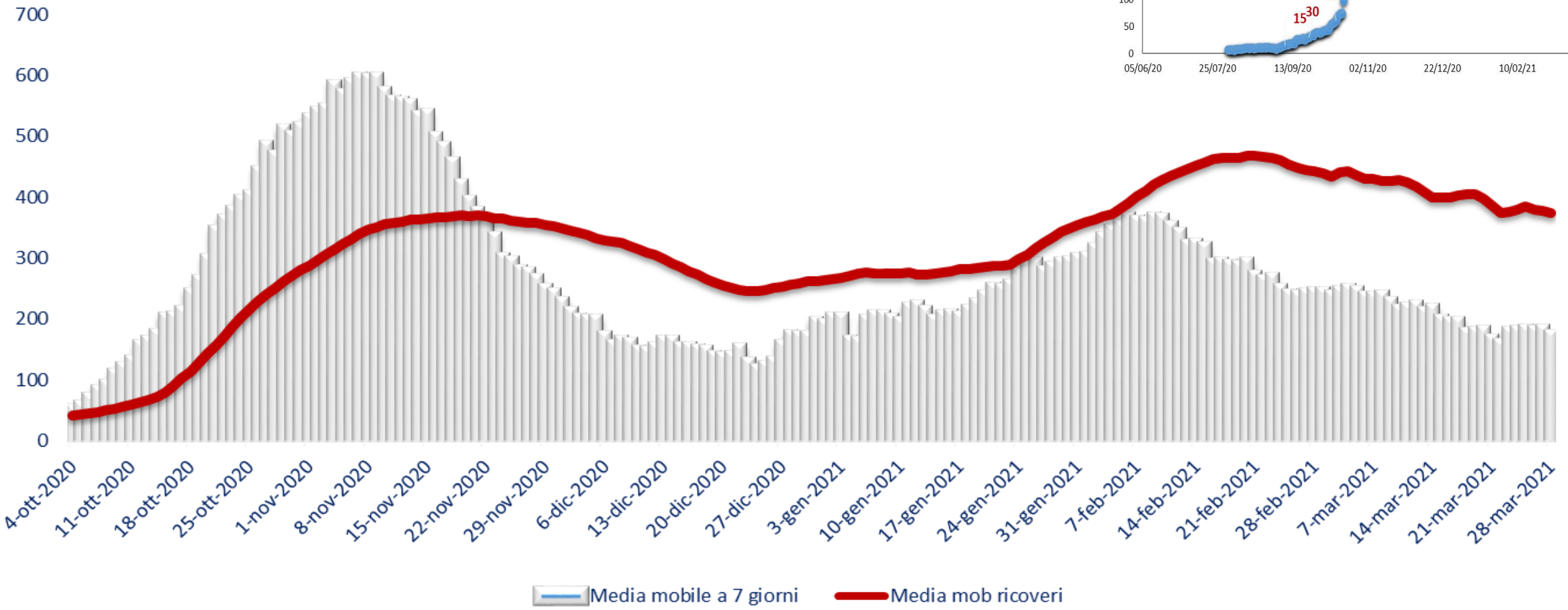
Umbria classi di età 19 – 79 anni incidenza per 100.000 abitanti



Umbria classi di età 80 e più anni incidenza per 100.000 abitanti

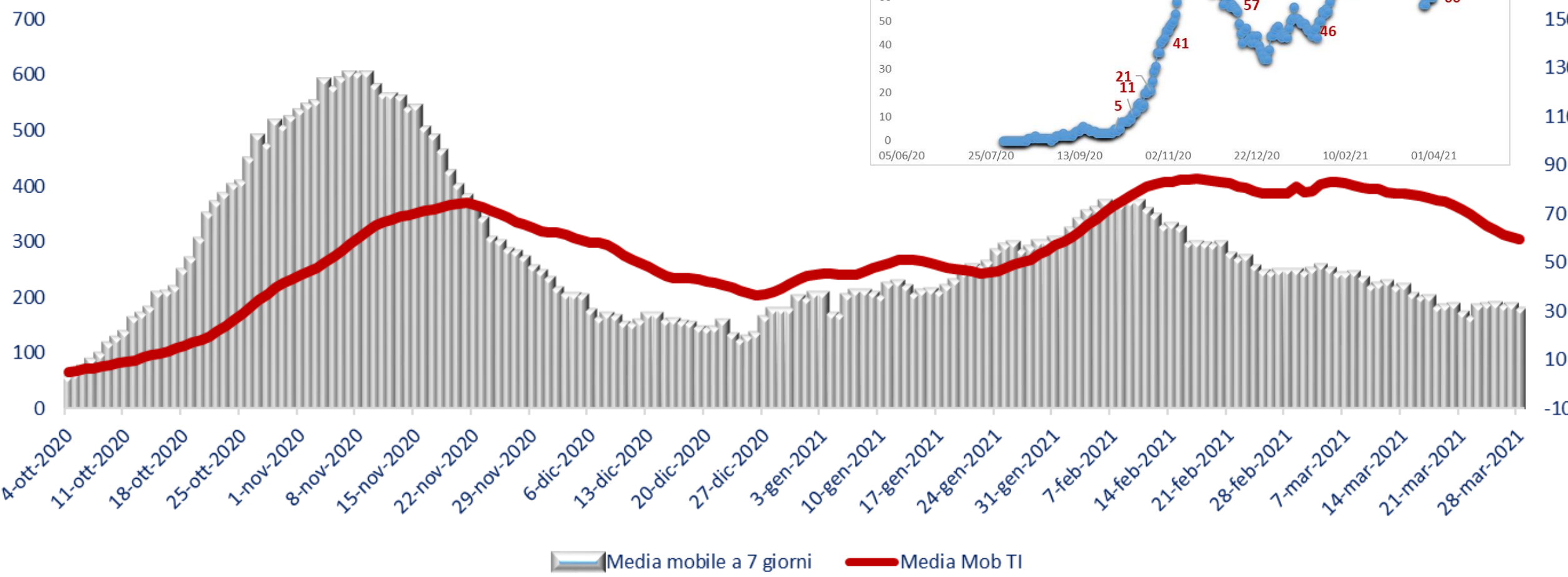


Confronto curva epidemica e ricoveri

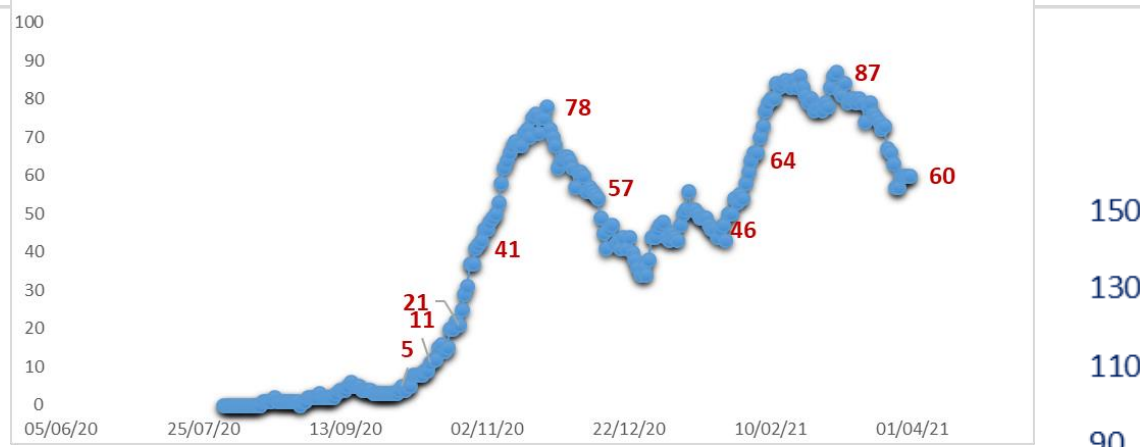


Media mobile a 7 giorni Media mob ricoveri

Confronto curva epidemica e ricoveri in TI



Ricoveri in terapia intensiva



Media mobile a 7 giorni Media Mob TI

Decessi

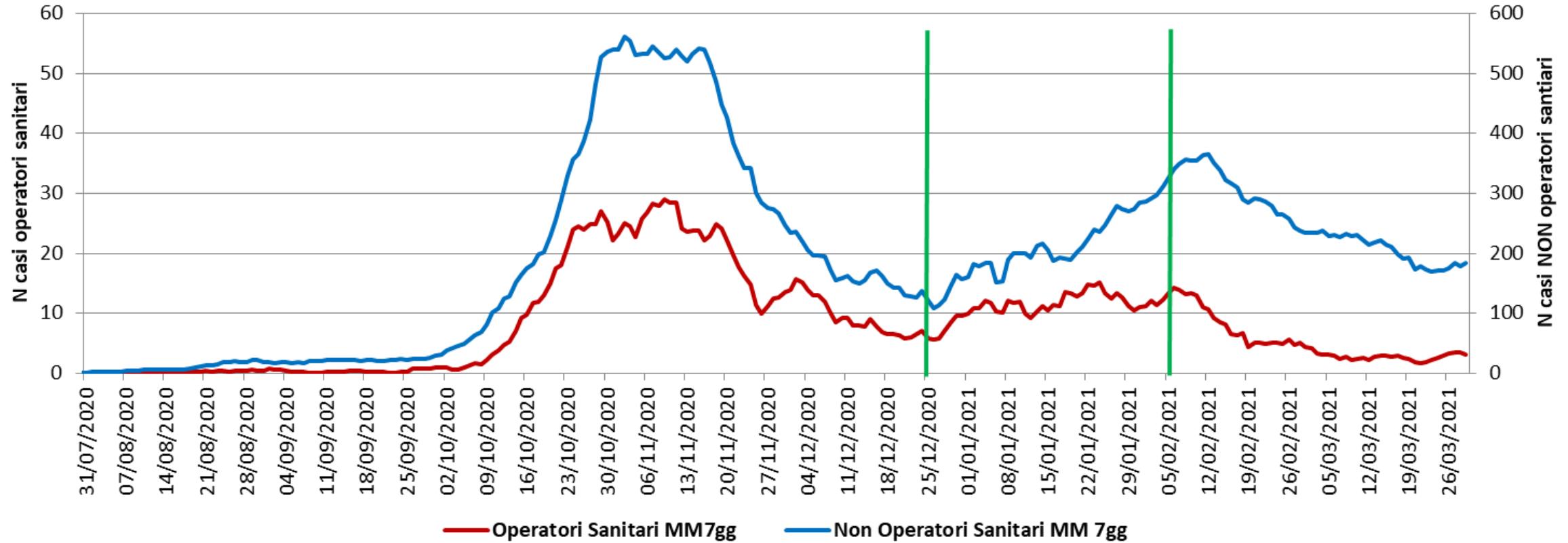


Tabella 3.

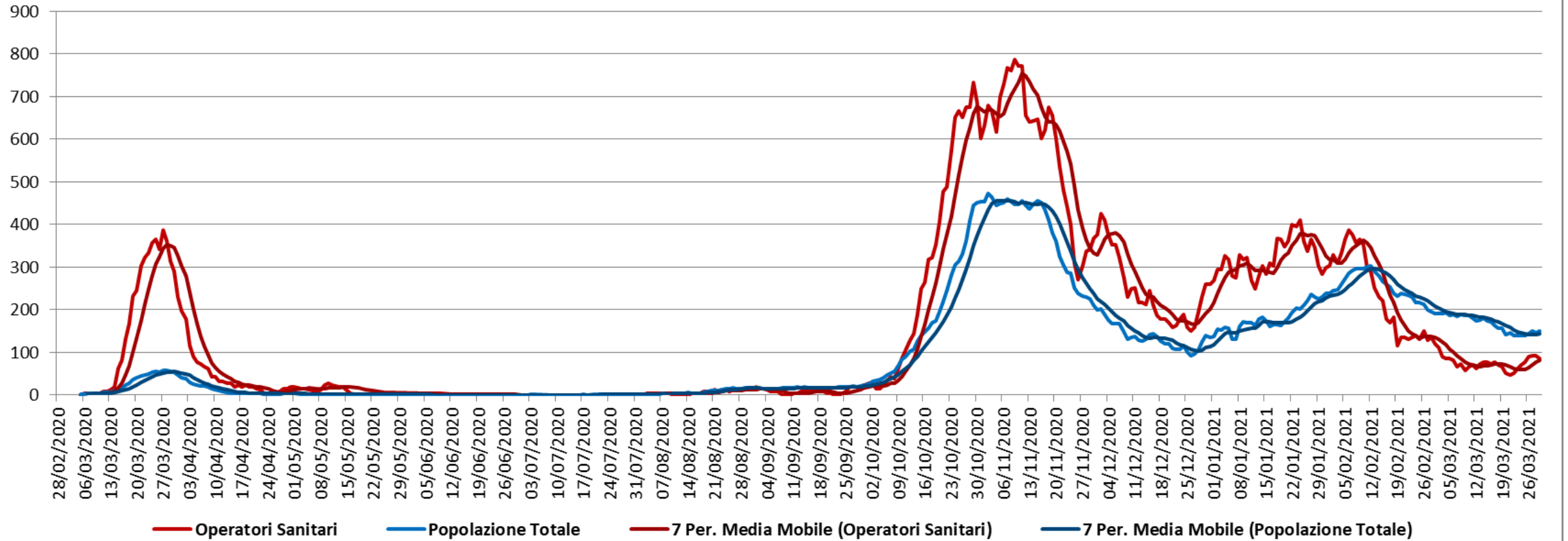
REGIONE/PA	N. Laboratori	N. campioni positivi in RT-PCR	N. campioni sequenziati	N. di sequenze ottenute per analisi	N. Varianti VOC202012/01 (lineage B.1.1.7)	N. Varianti P1	N. Varianti 501.V2 (lineage B.1.351)	N. varianti lineage P.2	N. varianti lineage B.1.525	N. altra VOC	Prevalenza VOC202012/01 (lineage B.1.1.7)	Prevalenza P1	Prevalenza 501.V2 (lineage B.1.351)	Prevalenza lineage P.2	Prevalenza lineage B.1.525
ABRUZZO	2	293	87	80	66	4	0	0	0	10	82,5	5,0	0	0	0
BASILICATA	6	62	27	20	13	0	0	0	0	4	65,0	0	0	0	0
CALABRIA	1	26	26	26	22	0	0	0	0	4	84,6	0	0	0	0
CAMPANIA	3	1400	261	261	232	4	0	0	0	25	88,9	1,5	0	0	0
EMILIA ROMAGNA	2	169	169	169	147	13	0	0	1	1	87,0	7,7	0	0	0,6
FRIULI VENEZIA GIULIA	7	126	55	55	49	0	0	0	0	11	89,1	0	0	0	0
LAZIO	11	214	205	205	161	42	0	0	0	1	78,5	20,5	0	0	0
LIGURIA	8	179	22	22	14	3	0	0	0	2	63,6	13,6	0	0	0
LOMBARDIA	12	314	314	312	278	0	1	0	3	20	89,1	0	0,3	0	1,0
MARCHE	11	65	19	19	54**	2	0	0	0	9	83,1**	3,08**	0	0	0
MOLISE	1	63	16	16	13	2	0	0	0	1	81,3	12,5	0	0	0
PA BOLZANO	1	69	15	15	12	0	0	0	2	1	80,0	0	0	0	13,3
PA TRENTO	1	16	16	16	16	0	0	0	0	0	100,0	0	0	0	0
PIEMONTE	16	155	153	153	138	1	0	0	0	14	90,2	0,7	0	0	0
PUGLIA	11	126	126	126	117	0	0	0	0	0	92,9	0	0	0	0
SARDEGNA	6	85	21	21	18	0	1	0	0	2	85,7	0	4,8	0	0
SICILIA	5	632	132	129	97	3	0	0	3	14	75,2	2,3	0	0	2,3
TOSCANA	3	144	103	99	85	10	0	0	1	3	85,9	10,1	0	0	1,0
UMBRIA	5	80	26	25	16	8	0	0	0	1	64,0	32,0	0	0	0
VALLE D'AOSTA	1	32	2	2	2	0	0	0	0	0	100,0	0	0	0	0
VENETO	13	156	156	156	138	2	1	0	3	0	88,5	1,3	0,6	0	1,9
<i>Totale</i>	<i>126</i>	<i>4406</i>	<i>1951</i>	<i>1927</i>	<i>1688</i>	<i>94</i>	<i>3</i>	<i>0</i>	<i>13</i>	<i>123</i>	<i>86,7</i>	<i>4,0</i>	<i>0,1</i>	<i>0</i>	<i>0,6</i>

Al 18 marzo 2021 - Umbria terza indagine ISS prevalenza varianti 96% di cui 64% inglese e **32%** brasiliana

Andamento nuovi casi: confronto tra Operatori Sanitari e Non Operatori Sanitari



Andamento incidenza settimanale mobile (x100.000): confronto Operatori Saniatri e Popolazione Totale



Andamento incidenza settimanale mobile (x100.000): confronto Operatori Saniatri e Popolazione Totale

